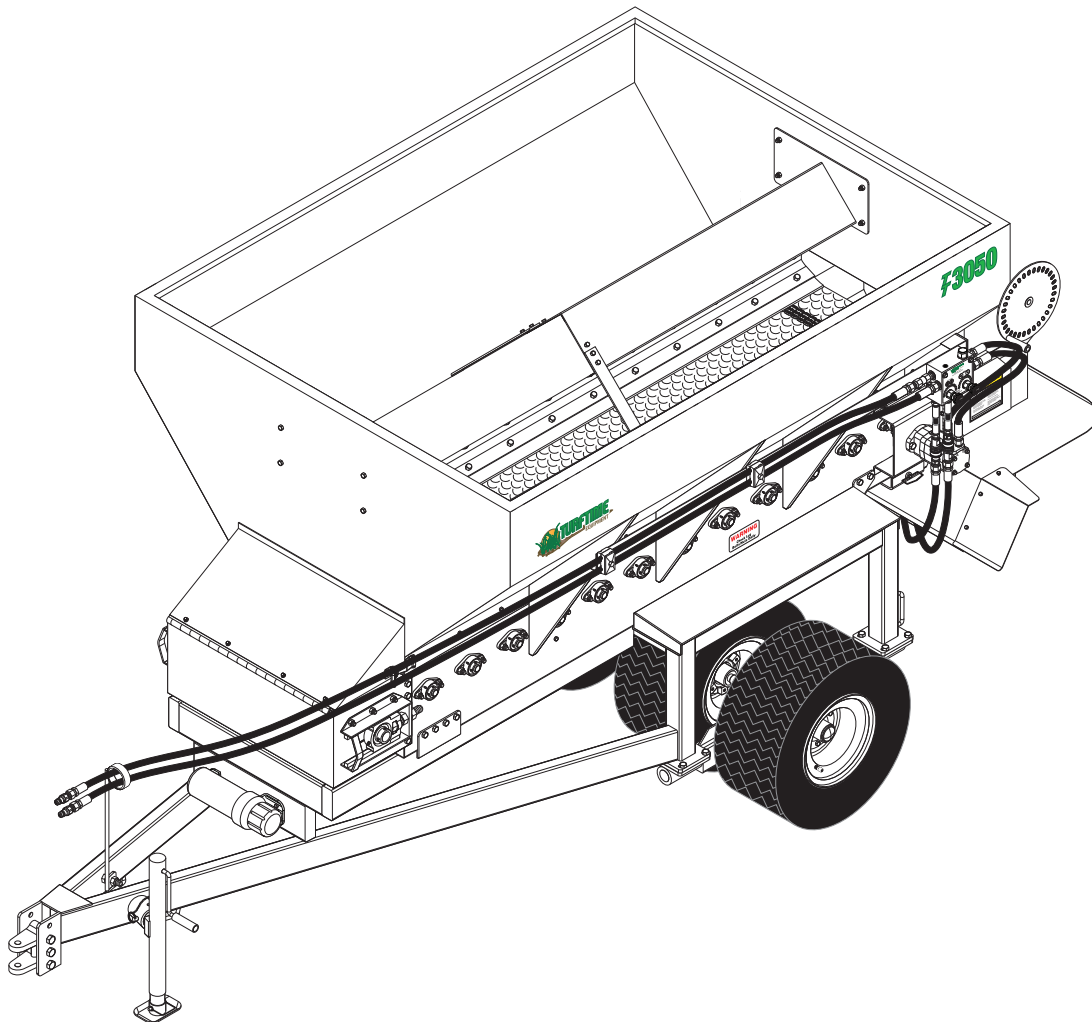




800 N. Railroad Avenue
New Holland PA 17557
Phone (800) 201-1031
<http://www.turftimeeq.com/>



Topdresser

Owner's Manual

MODELS TT-3050 & 3065

DISCLAIMER

The information in this manual is provided to promote the safe use of and assist the operator in achieving the best performance from the products described when used for their intended applications.

TurfTime Equipment, LLC reserves the right to alter, correct, and/or improve the documentation and the products described within the documentation at its own discretion and without giving prior notice as far as this is reasonable to the owner of the products.

You are responsible to verify the suitability and intended use of any TurfTime Equipment, LLC products for your specific application. All information made available in the documentation is supplied without any accompanying guarantee.

This manual, including all illustrations contained herein, is copyright protected. Any changes to the contents or the publication of extracts of this document is prohibited. This manual is furnished to you by TurfTime Equipment LLC as a guide to get the greatest benefit from your product. Before attempting to install or operate, carefully read all sections of this manual. Be sure that you thoroughly understand all of the safety information and operating procedures.

SAFETY PRECAUTION DEFINITIONS

Dangers, Warnings, Cautions, and Notes are strategically placed throughout this manual to further emphasize the importance of personal safety, qualifications of operating personnel, and proper use of the equipment in its intended application. These precautions supplement and/or complement the safety information decals installed on the equipment and include headings that are defined as follows:

DANGER

Indicates an imminently hazardous situation which, if not avoided, will result in death or serious injury.

WARNING

Indicates a potentially hazardous situation or practice which, if not avoided, could result in death or serious injury.

CAUTION

Indicates a potentially hazardous situation or practice which, if not avoided, will result in damage to equipment and/or minor injury.

NOTICE

Indicates an operating procedure, practice etc., or portion thereof, which is essential to high-light.

Always use caution and safe operating practices when operating this equipment.

Install all safety panels and guards before operating your equipment.

Stay clear of all moving parts when the machine is in operation.

Keep all people clear of the machine when it is running.

Read and comply with all safety recommendations of your tractor/skid steer manufacturer, as outlined in its operator and service manuals.

NOTE: Some equipment depicted in illustrations may not reflect exact production model configurations.

LIMITED WARRANTY STATEMENT

3-year Limited Warranty

TurfTime Equipment, LLC, (TTE) hereby warrants that TTE's products will be free from defects in material and workmanship under normal use according to the provisions and limitations herein set forth. All parts, specifically EXCLUDING expendable 'wear' parts, that become unserviceable, due to defective material or workmanship, within 3 YEARS of date of the original retail purchase, shall, at TTE's option, be repaired or replaced as detailed below.

If the equipment is used for rental purposes, warranty is limited to 90 days from the initial rental date.

Limitations

The obligations of TTE for breach of warranty shall be limited to products manufactured by TTE; (1) that are installed, operated, and maintained according to TTE's instruction furnished and/or available to the purchaser upon request; (2) that are installed according to all other applicable federal, state, and local codes or regulations; and (3) that the purchaser substantiates were defective in material and workmanship notwithstanding that they were properly installed and correctly maintained as set forth and were not abused or misused. The obligation of TTE shall be limited to replacing or repairing the defective product, at the option of TTE. TTE shall not be responsible for any labor or cost of removal or repairing or re-installation of its products and shall not be liable for transportation costs to and from its facility in New Holland, PA. Use of parts for modification or repair of the product or any component part thereof not authorized or manufactured by TTE specifically for such product shall void this warranty.

This warranty shall not apply to any damage to or defect in TTE's products that is directly or indirectly caused by; (1) FORCE MAJEURE, act of GOD, or other accident not related to an inherent product defect; or (2) abuse, misuse, or neglect of the such product, including any damage caused by improper assembly, installation, adjustment, or faulty instruction of the purchaser. Other than as expressly set forth herein above, TTE makes no other warranty, express or implied, with respect to any of TTE's products, included but not limited to any merchantability or fitness for a particular

purpose. In no event shall TTE be responsible for any incidental or consequential damages of any nature suffered by purchaser or any other person or entity caused in whole or in part by any of TTE's products.

Any person or entity to whom this warranty extends and who claims breach of warranty against TTE must bring suit thereon within 60 days from the date of occurrence of such breach of warranty or be forever barred from any and all legal or other remedies for such breach of warranty. TTE is not responsible for and hereby disclaims any undertaking, representation, or warranty made by any dealer, distributor, or other person that is inconsistent with or in any way more expensive than the provisions of this limited warranty. This warranty grants specific legal rights and shall be read in conformity with applicable state law. In some jurisdictions, the applicable law mandates warranty provisions that provide greater rights than those provided for herein. In such case, this limited warranty shall be read to include such mandates provisions; and any provision herein that is prohibited or unenforceable in any such jurisdiction shall, as to such jurisdiction, be ineffective to the extent of such prohibition or unenforceable without invalidating the remaining provisions and without affecting the validity or enforceability of such provisions in any other jurisdiction.

Statement of Policy

In accordance with our established policy of constant improvement, we reserve the right to amend these specifications at any time without notice.

Warranty by Manufacturer

Dealer/distributor understands and agrees that the manufacturer extends only the following warranty to its customers. In the event dealer/distributor extends any additional warranty such as enlarging the scope or period of warranty or undertaking a warranty of fitness for any particular purpose or obligation not encompassed in manufacturer's warranty, dealer/distributor shall be solely responsible therefore and shall have no recourse against manufacturer with respect thereto.

CONTENTS

Disclaimer	i
Safety Precaution Definitions.....	i
Limited Warranty Statement.....	ii
3-year Limited Warranty.....	ii
Limitations.....	ii
Statement of Policy	ii
Warranty by Manufacturer	ii
Figures	iv
Safety.....	1
Assembly.....	1
Inspection.....	1
Warranty.....	1
SETUP AND OPERATION.....	1
Before use.....	2
Drawbar connection.....	2
Electric controls (optional)	2
Operating Considerations.....	2
Load capacity	2
Hydraulic requirements.....	3
Operation.....	3
Loading	3
Top dressing.....	3
Metering gate opening	3
Belt speed	3
Ground speed.....	4
Spread pattern.....	4
Adjustments.....	4
Metering gate.....	4
Belt speed.....	4
Spinner speed.....	4
Lubrication	5
Recommended procedure.....	5
General	5
Wheels and tires.....	5
Hydraulic system	5

MAINTENANCE.....	5
Auxiliary engine.....	6
Wheel bearings	6
Apron belt.....	6
Belt tension	6
Belt tracking	7
Belt replacement	7
Troubleshooting.....	8
Specifications.....	9
NOTES.....	10
How to order repair parts	11
ILLUSTRATED PARTS BREAKDOWN.....	11
MAINTENANCE RECORDS.....	32

FIGURES

Figure 1-1. Metering Gate Adjustment.....	3
Figure 1-2. Belt and Spinner Control	4
Figure 2-1. Roller Bearings.....	5
Figure 2-2. Wheel Hub Lubrication	5
Figure 2-3. Wheel Hub	6
Figure 2-4. Belt Tensioner	6
Figure 2-5. Belt Replacement	7
Figure 3-1. Frame, Dual Wheels, Drawbar, Jack and Related Parts	12
Figure 3-2. Frame, Single Wheels, Drawbar, Jack and Related Parts.....	14
Figure 3-3. Hopper and Related Parts	16
Figure 3-4. Rollers, Bearings and Related Parts	18
Figure 3-5. Belt and Related Parts.....	20
Figure 3-6. Gate Assembly and Related Parts.....	22
Figure 3-7. Spinner Attachment and Related Parts	24
Figure 3-8. Hydraulics and Related Parts.....	26
Figure 3-9. Hydraulics With Option Switch Box and Related Parts	28
Figure 3-10. Decals.....	30

SETUP AND OPERATION

SAFETY

While operating this equipment use common sense and follow all safety guidelines.

In addition to observing the specific precautions listed throughout this manual, the following general statements apply. These must be adhered to in order to insure proper and safe operation.

DANGER

DO NOT get off the tractor while the tractor PTO is engaged. Insure that the PTO shield and safety chains are properly installed.

Keep hands and feet from under the equipment at all times. Make sure that all people are safely clear of the equipment before operating.

In order to prevent serious injury and to promote safe operation, keep shields in place during operation, and insure that all mounting hardware is properly tightened.

WARNING

DO NOT attempt to operate the equipment in areas with steep inclines, ditches, large rocks, stumps, or holes that may upset the tractor, endangering the operator or damaging the equipment.

Never clean, adjust or repair the equipment while it or the tractor are running. Never attempt to pull material from any part of the equipment while it is running.

Never wear loose clothing while operating the equipment as it may become caught in the moving parts of the machine.

For safe operation of the equipment, periodically inspect all parts for excessive wear. Replace worn components with authorized parts.

To prevent the hitch from becoming disconnected during operation, always use the proper size hitch pin and safety cotter pin.

Be sure to use proper safety chains when towing equipment on a public roadway.

CAUTION

Most equipment accidents can be avoided by the observance of a few simple safety precautions.

Do not clean, lubricate or make any adjustments on the equipment while it is in motion.

Do not start the machine until you know everyone is clear of the area and all tools have been stowed away.

Do not work around the unit in loose clothing that might catch on any of the moving parts.

Do not attempt to pull material from any part of the equipment while it is in operation.

Replace all shields after lubrication or repairs.

Do not allow anyone to ride on the equipment.

Park on level ground or block wheels to prevent the machine from rolling.

Always follow manufacturer's instructions for maintenance, repair and adjustments.

Read and pay close attention to hydraulic line safety.

WARNING

Never attempt to stop a leak by covering it with your hand as doing so can cause severe injury.

TurfTime Equipment LLC assumes no liability for injuries sustained because of failure to read this manual or due to carelessness. Always refer to this manual for guidance, or contact your local dealer.

ASSEMBLY

Inspection

While the Topdresser is shipped fully assembled, it is recommended that an inspection be made upon receipt and any damage or shortages be reported to the shipping company.

Warranty

Locate the warranty card in the literature packet and complete it. For proper warranty registration Turf Time requires that you fill out the warranty registration card and return it within 30 days.

SETUP AND OPERATION

Before use

Before initial use, check the following:

Check for proper assembly and adjustment making sure all bolts are securely tightened. Re-tighten the bolts after 4 hours of operation.

Torque the wheel bolts to 120 lb-ft. Recheck the bolts after every other load until the torque does not decrease and every 300 loads thereafter.

Check the tires and inflate them to the recommended pressure shown on the side wall of each tire.

Adjust the tractor hitch and attach the Topdresser to the tractor as detailed in this manual.

Connect the hydraulic hoses to the tractor hydraulic ports, if required.

Lubricate the machine completely and check the oil level in the hydraulic reservoir, if applicable.

Install a slow moving vehicle (SMV) emblem (available from your dealer) on the rear of the unit, if the Topdresser is to be transported on public roadways.

Do not operate the Topdresser until after "Safety" on page 1 in this manual has been read and understood by the operator.

Review "Figure 3-8. Decals" on page 26", and ensure that all the decals are legible on the Topdresser. Read and understand each decal and understand what the dangers involved.

If equipped with an engine drive, ensure the engine oil and coolant have been checked and are within the specified fill level range.

Drawbar connection

WARNING

Only connect the Topdresser to the tow vehicle drawbar. Never connect it to the 3-point hitch in any way.

Use only a 7/8" hitch pin of sufficient length to engage the upper and lower clevis of the drawbar.

Always use a clip to secure the hitch pin in the drawbar.

Electric controls (optional)

An optional electric control is available to engage the apron belt from the operator station. A remote switch with connection to a 12-volt battery must be established on the tow vehicle.

OPERATING CONSIDERATIONS

NOTICE

Not following these instructions may void the warranty.

Load capacity

WARNING

Weight limitations apply!

Ensure the tow vehicle is capable of handling the gross vehicle weight (GVW) of the Topdresser and its load. The GVW of the Topdresser must not exceed 1.5 times the weight of the tow vehicle.

The weight rating of the tires must not be exceeded. Refer to the tire sidewall for the maximum weight capacity.

The tire load capacity is printed on the sidewall of the tire. Multiply this capacity time the number of tires to determine the gross vehicle weight rating (GVWR) of the Topdresser.

The volume capacity of the Topdresser may allow overloading of the tires, tow vehicle, or both, when using high-density products, such as sand. Know the weight of the product you are loading.

For example, the empty (tare) weight of a TT-3065 is 3200 lb. The capacity of each 33-18LL x 16.1 tire is 5520 lb. or 22800 lb. total. This will allow 19600 lb. of material to be loaded into the Topdresser. Some materials are very dense (sand is approximately 90 lb/ft³), the TT-3065 may appear to be only approximately 3/4 full. Other materials (hydrated lime is approximately 25 lb/ft³) will allow installation of the optional side extensions without exceeding the GVWR.

SETUP AND OPERATION

Hydraulic requirements

The Topdresser belt and spinners are hydraulically driven. The hydraulic system can be driven either directly from the tow vehicle or through a separate, PTO-driven hydraulic system mounted on the side of the Topdresser.

If using the tow vehicle hydraulics, it must provide a minimum of 8 gpm flow at 1750 psi. Adjustable oil flow is recommended to limit the oil flow to less than 10 gpm. Oil flow outside of this range may result in hydraulic components overheating and insufficient operational quality.

NOTICE

Refer to the tow vehicle documentation for details on setting and maintaining the hydraulic flow and pressure recommendations.

WARNING

Hydraulic oil under pressure can penetrate the skin causing serious personal injury. Before applying pressure to the system, ensure that all lines and couplers are tight and not damaged.

Before disconnecting lines, be sure to relieve pressure in the system.

Always clean the hydraulic quick couplers on the tow vehicle and Topdresser before connecting.

OPERATION

Loading

Always load the Topdresser on a flat, level surface while attached to the tow vehicle. Best results are obtained when the load is distributed evenly across the Topdresser.

NOTICE

The Topdresser should not be stored outdoors without a tarp covering the load. In the event of rain, the moisture absorbed by the loaded material may cause overload of the Topdresser, as well as making it difficult to unload.

Never allow a load to freeze in the Topdresser as severe equipment damage may result.

Top dressing

There are three variables which effect how much material is applied:

- Metering gate opening.
- Belt speed.
- Ground speed.

The spinner speed determines the width of the spread pattern, ranging from 6 to 50 ft.

Metering gate opening

For most sand applications, the metering gate opening should be in the two-inch to three-inch range. A two-inch opening is an ideal starting point for dry sand.

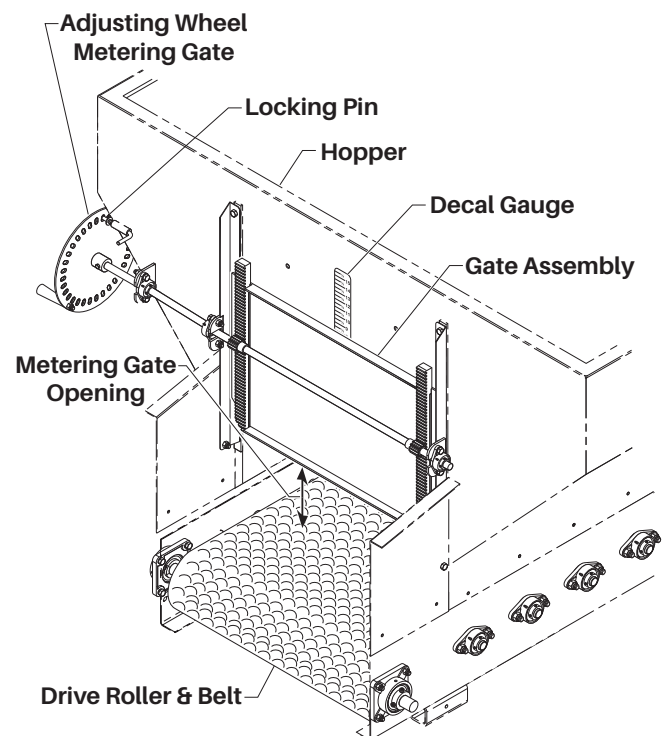


Figure 1-1. Metering Gate Adjustment

For most organic-material applications, the metering gate opening should be in the three-to six-inch range. A four-inch opening is recommended as a starting point.

Belt speed

Increasing the belt speed increases the rate of material delivered to the spinners. Belt speed can vary from 0 to 30 ft. per min. and is controlled by a flow control valve.

SETUP AND OPERATION

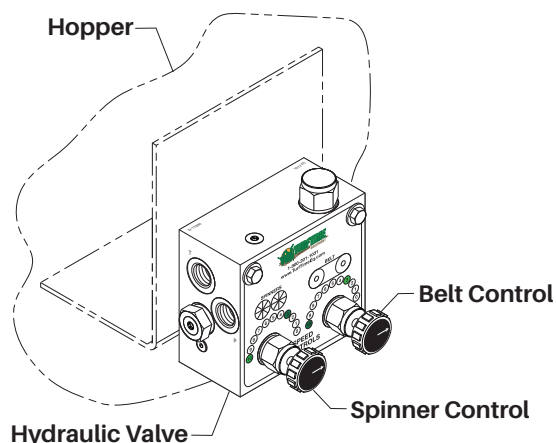


Figure 1-2. Belt and Spinner Control

Position **10**, located at the 3 o'clock position, will produce the maximum belt speed. Most applications will utilize a belt speed between 7 and 9, with position **8** recommended as a starting point.

Ground speed

A typical ground speed for effective application is between 3 and 5 mph. This will vary according to application rate, material being applied, and weather conditions.

Spread pattern

The rotational speed of the spinners determines the width of the spread pattern, varying from 6 to 50 ft.

Normally, the spinner flow control valve (see Figure 1-2) is set to **10** for a maximum spread pattern. The spread pattern will vary depending upon the material being distributed, with lighter, organic material possibly only covering 25 to 30 ft.

If a narrower pattern is desired, the spinner flow control valve may be set lower.

ADJUSTMENTS

It is recommended that a smaller, known amount of material be spread over a specific area and then further adjustments can be made to obtain the correct application rate. Adjustments can be made to the metering gate, belt speed or spinner speed to fine tune the application rate and coverage.

Metering gate

To change the metering gate opening:

1. Turn off the hydraulic power source.
2. Remove the hairpin clip and stop pin securing the metering wheel in place (see Figure 1-1).
3. Rotate the metering wheel to adjust the gate to the desired opening size. Rotate the wheel clockwise to increase the opening and counterclockwise to reduce the opening.
4. Re-install the stop pin and secure it with the hair pin clip in the desired position.

Belt speed

The apron belt moves material to the rear of the Topdresser. While you want to always have material available at the metering gate opening, too much material could accumulate against the metering gate and inhibit the material flow or cause bridging.

To adjust the belt speed, change the belt speed flow control valve (see Figure 1-2). Higher-number positions increase the belt speed and lower-number positions decrease belt speed. Maximum belt speed is 30 ft. per min. and adjustments should be made in small increments. Each number position results in a 3.0 ft. per min. difference in belt speed.

Spinner speed

Spinner speed is adjusted by using the spinner flow control valve (see Figure 1-2). Higher numbers on the valve result in higher rotational speed and a wider pattern. Lower numbers result in a lower rotational speed and a narrower pattern.

⚠ CAUTION

Never stand behind the Topdresser to make adjustments, perform maintenance, or repair equipment when the power source is active.

MAINTENANCE

⚠ WARNING

Always stop the machine and turn off the power supply before servicing the machine.

LUBRICATION

The Topdresser requires a minimum amount of lubrication. However, the importance of sufficient and proper lubrication cannot be overstated as it is the best insurance against unnecessary repairs and will greatly increase the life of the machine.

Recommended procedure

Use a high-quality, extreme pressure (EP) 2 lithium grease on all bearings. Examples of acceptable grease are Exxon Mobil Ronex MP and Lubriplate 1200-2.

Ensure grease fittings are free of pain and dirt. Grease should be forced into the fittings until it comes out around the shaft.

NOTICE

Do not over-lubricate sealed bearings. Apply one-half stroke or pump from a grease gun once per year.

Lubricate all roller bearings once per year.

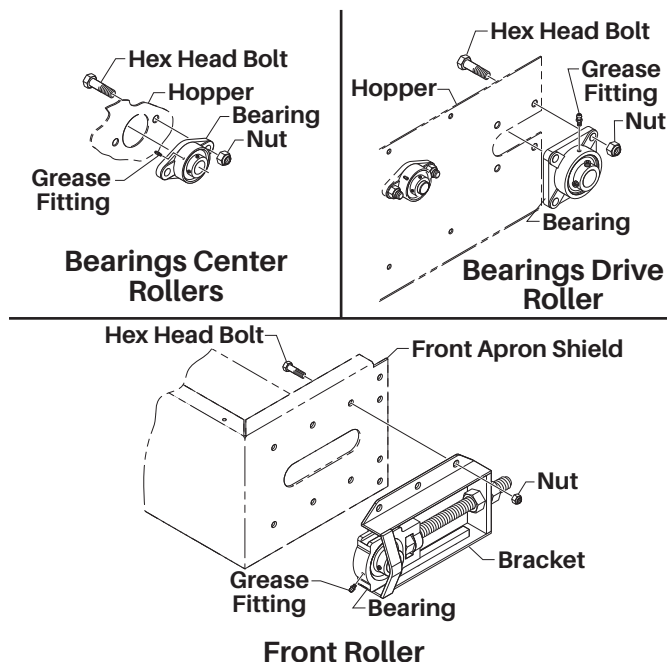


Figure 2-1. Roller Bearings

Lubricate all belt-tightening bearings once per year.

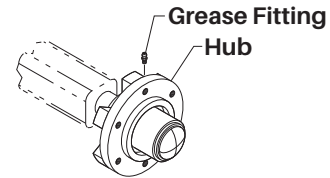


Figure 2-2. Wheel Hub Lubrication

GENERAL

⚠ CAUTION

Always replace shields after maintenance and before beginning operation.

Protect the machine from weather when it is not in use.

Check the hopper at the end of each day for material build up or more often if spreading particularly wet or sticky material. Clean out any excess material when found.

At the end of each season, check the Topdresser carefully and replace all worn or damaged parts. Use only genuine TurfTime parts supplied by your authorized TurfTime dealer.

Keep the spinners and apron belt clean. Remove any residue, spread material buildup, and foreign objects regularly.

Never store material in the Topdresser during cold months. Freezing of the material could cause severe damage, such as a torn apron belt.

Storing wet material in the Topdresser or keeping it outdoors with material in it will cause early corrosion.

Wheels and tires

Once each month:

Check the lug bolt torque on each wheel. Bolts should be torqued to 120 lb-ft.

Check tires for cuts and damage.

Ensure tires are properly inflated.

Hydraulic system

Once per month:

Inspect the hydraulic hoses for flexibility and any sign of rubbing or cracking. Replace any hose where a defect is found.

Auxiliary engine drive: Check hydraulic reservoir level.

MAINTENANCE

Ensure the tow vehicle hydraulics are well maintained with clean oil. Follow the prescribed maintenance plan of the tow vehicle.

Auxiliary engine

The optional engine is a Honda GX390. Following recommended maintenance specified in the manuals that came with the engine.

NOTICE

For engine warranty and maintenance issues, contact an authorized Honda dealer.

Wheel bearings

Wheel hub bearings must be adjusted after 100 loads or one year, whichever comes first.

To adjust the wheel hub torque:

1. Park the Topdresser on a level place and chock the wheels to ensure that it will not roll or move.
2. Raise one side of the Topdresser using a jack or appropriate lifting device.

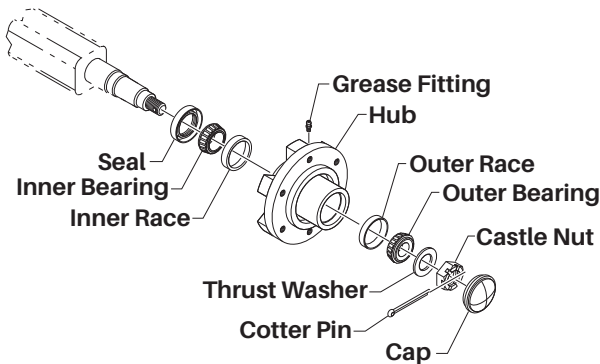


Figure 2-3. Wheel Hub

3. Remove the hub cap from the center of the hub.
4. Remove the cotter pin from the slotted nut and loosen the slotted nut (rotate it counterclockwise) a turn or two.
5. While rotating the hub, use a torque wrench to torque the slotted nut to 35 lb-ft.
6. Rotate the slotted nut counterclockwise (back-off) just enough for a nut slot to align with the axle hole. Install the cotter pin through the slotted nut and axle. Do not back-off the slotted nut more than one-third turn.
7. Repeat steps 2 through 6 for the other side of the machine.

Apron belt

Check the apron belt weekly for proper tension and tracking.

Belt tension

It is common for a new belt to stretch in the first few loads so a new machine or if the belt has been replaced, check the belt tension after the first two loads and again after ten loads.

If the belt slips, adjust the belt tension:

1. Park the Topdresser on a level place and chock the wheels to ensure that it will not roll or move.

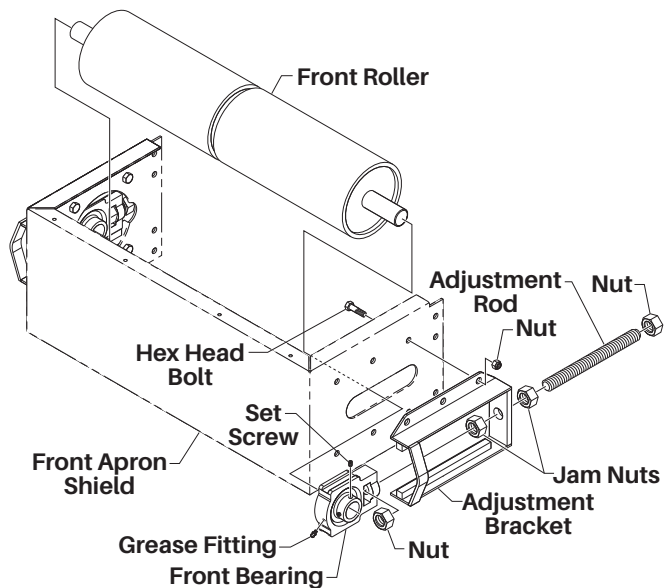


Figure 2-4. Belt Tensioner

2. Loosen the tensioner jam nut on each side of the machine.
3. Turn the adjustment nut clockwise one full turn on each side, making sure each side moves the same distance.
4. Tighten the jam nuts on each side to prevent movement.
5. With everyone clear, start and operate the Topdresser belt for 5 minutes to ensure there is no slippage.
6. If slippage continues, repeat steps 2 through 5. Stop the Topdresser and turn off the drive system before readjusting.

Belt tracking

NOTICE

If the apron belt is out of alignment, stop operation as soon as possible. While it is appropriate to empty the Topdresser to be able to adjust the belt, it is recommended that it be done so at a reduced speed.

The apron belt has a V-groove in the center, but it could potentially get out of alignment, if the belt tensioners are not set properly. This is indicated by a bulge in the belt at the rear roller and belt tracking to one side or the other.

This can be corrected by adjusting a belt tensioner.

1. Park the Topdresser on a level place and chock the wheels to ensure that it will not roll or move.
2. Determine the side to which the belt is moving. This is the "short" side and the belt tensioner must be lengthened on this side to realign the belt.

NOTICE

Alternatively, the "long" side can be shortened, but typically the belt has stretched since the last adjustment and needs to be lengthened anyway.

3. Loosen the tensioner jam nut on the short side of the belt.
4. Turn the adjustment nut clockwise one full turn.
5. Tighten the tensioner jam nut to prevent movement.
6. With everyone clear, start and operate the Topdresser belt for 5 minutes to ensure proper tracking.

Belt replacement

When installing a replacement belt, after installation and tracking the Belt. Cover the lacing with the silicone/calk that was provided with the new replacement belt.

Let it dry before using top dresser. This is to prevent sand from syphoning through the lacing and getting in between the belt.

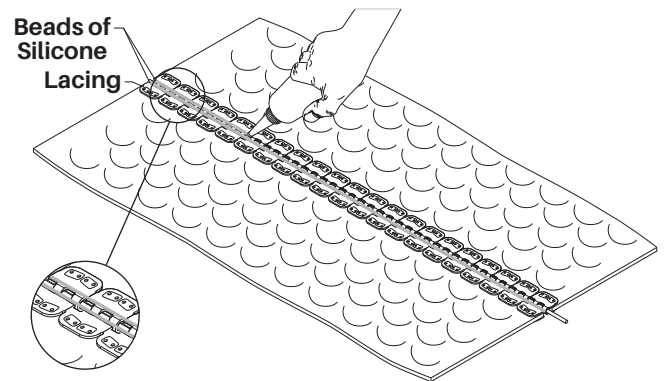


Figure 2-5. Belt Replacement

NOTE Apply two beads of silicone and then smear all over the lacing,

MAINTENANCE

TROUBLESHOOTING

Problem	Possible cause	Check
Machine is engaged, but not functioning	Material is bridged at the metering gate	Disengage the drive system (vehicle hydraulics or auxiliary engine), raise the metering gate, and clear material causing the blockage
	Material is jammed at spinners or beaters	Disengage the drive system and clear material from spinners
	Hydraulic oil level too low	Fill oil reservoir (vehicle or auxiliary engine hydraulic reservoir) to proper level
	Hydraulic controls not in correct position	Make sure hydraulic control valves are properly engaged in the correct direction
Spinners/beaters are turning but material is not feeding	Belt is slipping or broken	See belt maintenance section to replace or adjust belt
Belts and spinners/beaters are rotating in reverse	Vehicle hydraulic lines are reversed	Reverse lines on spreader
Hydraulic system doesn't have sufficient power to operate	Motor seals are worn, obstruction in hydraulic lines	See hydraulic maintenance section
	Oil overheated	Review hydraulic system requirements and ensure vehicle satisfies requirements
	Hydraulic oil level too low	Fill oil reservoir (vehicle or auxiliary engine hydraulic reservoir) to proper level

MAINTENANCE

SPECIFICATIONS

	TT-3050	TT-3065
Drive system	Standard: Tractor Plug-In Hydraulics / Optional: PTO Driven Pump Hydraulics	
Hopper capacity: Struck	5 yds.	6.5 yds.
Hopper capacity: Heaped	6.5 yds.	8 yds.
Hopper dimensions		
Width top	72 in.	72 in.
Width bottom	31 in.	31 in.
Length top	96 in.	120 in.
Length bottom	96 in.	120 in.
Height	42 in.	42 in.
Overall dimensions (H x L x W)	84 x 198 x 92 in.	84 x 222 x 92 in.
Loading height	84 in.	84 in.
Weight (approximate) without options	3,200 lb.	3,400 lb.
Hopper construction	11 gauge welded steel with powder-coat paint	
Hitch and frame	Heavy Duty Frame and Tongue with Adjustable Clevis Hitch	
Spinner system	Dual Spinners adjustable from 6' to 50' spreading width	
Metering gate	31" wide x 17" high, Rotating metering wheel, optional electric or hydraulic adjustment	
Feed belt	Crescent Style Belt w/ center tracking V- guide 30" wide	
Pin-on attachments	Standard spinners, Optional beater	
Operating speed	0 to 10 mph - Speed may vary depending on ground conditions	
Transport speed	25 mph maximum	

NOTES

ILLUSTRATED PARTS BREAKDOWN

Figure 3-1.	Frame, Dual Wheels, Drawbar, Jack and Related Parts	12
Figure 3-2.	Frame, Single Wheels, Drawbar, Jack and Related Parts	14
Figure 3-3.	Hopper and Related Parts	16
Figure 3-4.	Rollers, Bearings and Related Parts	18
Figure 3-5.	Belt and Related Parts	20
Figure 3-6.	Gate Assembly and Related Parts	22
Figure 3-7.	Spinner Attachment and Related Parts	24
Figure 3-8.	Hydraulics and Related Parts	26
Figure 3-9.	Hydraulics With Option Switch Box and Related Parts	28
Figure 3-10.	Decals	30

HOW TO ORDER REPAIR PARTS

Each Topdresser has its own model and serial number.

The model and serial number for the Topdresser is located on the lower front frame above the drawbar see Figure 3-1.

Always mention the model and serial number when calling for service or when ordering repair parts.

All parts listed and illustrated in this manual may be ordered through your nearest authorized dealer. If parts you need are not available locally, your order will be processed through the factory and shipped promptly.

When ordering repair parts, have the following information ready:

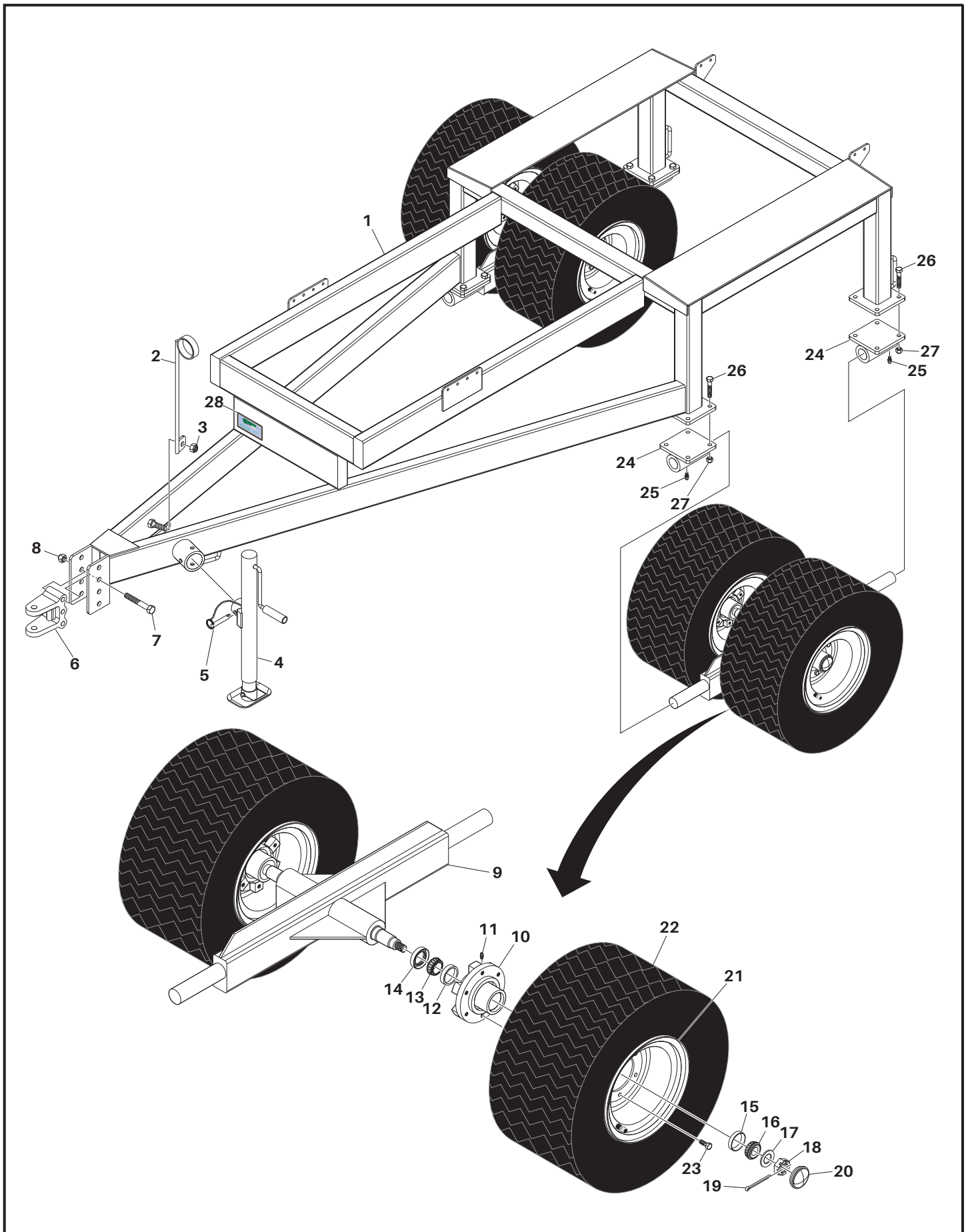
1. Item part number
2. Quantity needed
3. Part description
4. Topdresser model and serial number

Be sure to record both the model and serial number of your Topdresser upon delivery. Keep this information in a safe place for future reference.

TurfTime Equipment
800 N. Railroad Avenue
New Holland PA 17557
Phone (800) 201-1031

ILLUSTRATED PARTS BREAKDOWN

Figure 3-1. Frame, Dual Wheels, Drawbar, Jack and Related Parts



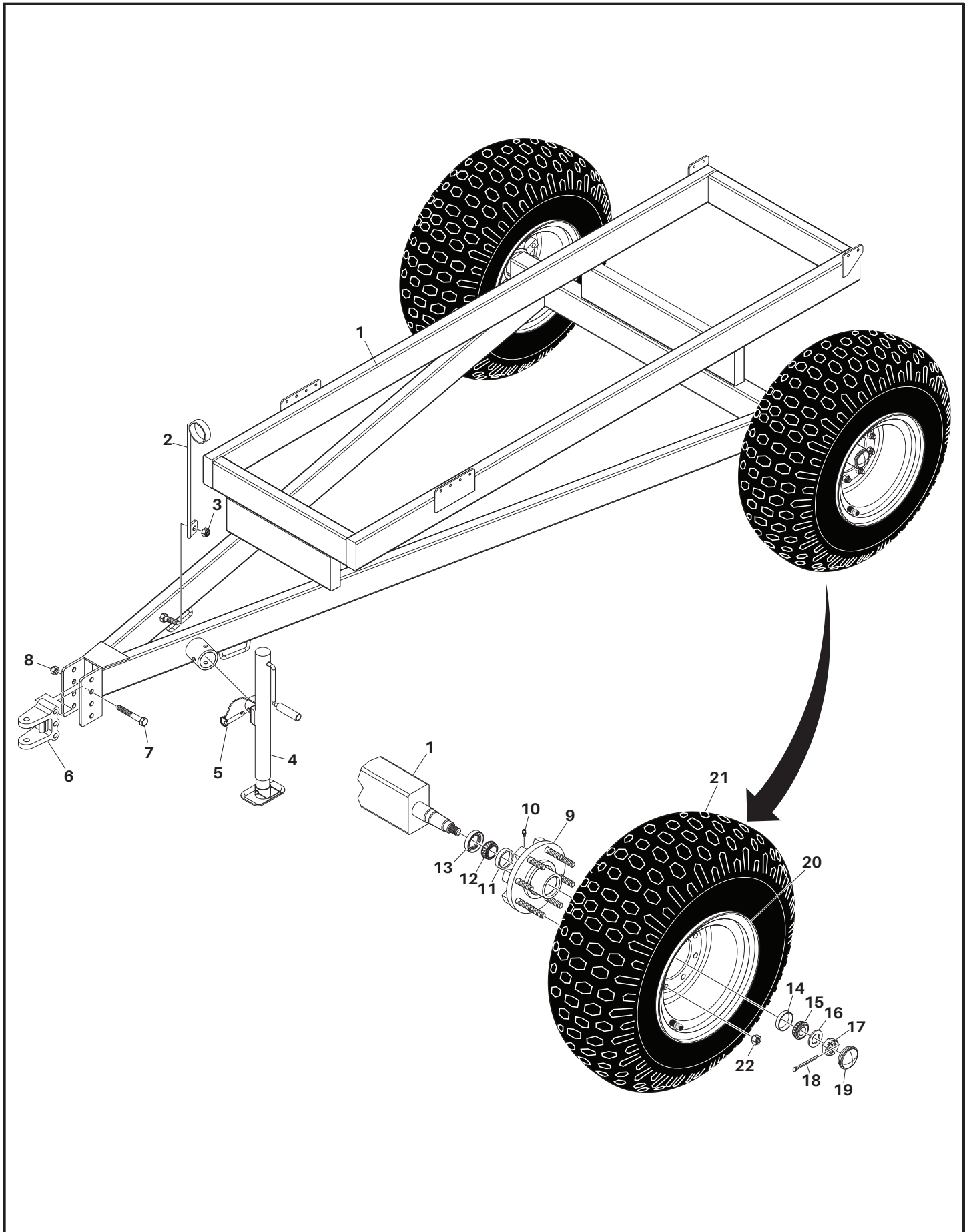
ILLUSTRATED PARTS BREAKDOWN

Figure 3-1. Frame, Dual Wheels, Drawbar, Jack and Related Parts

Item	Part No.	Qty	Description
1	NSS	1	Frame Assembly, Dual Wheels, Model 3050
	NSS	1	Frame Assembly, Dual Wheels, Model 3065
2	TT-3050071	1	Holder, Hose
3	TT-3050104	1	Nut, Hex, Nylon Lock, 5/8"-11UNC
4	TT-3050082	1	Jack, Includes Item 5
5	TT-3050109	1	Pin
6	TT-3050070	1	Hitch
7	TT-3050023	3	Bolt, Hex Head, 5/8"-11UNC x 4-1/2" Long
8	TT-3050104	3	Nut, Hex, Nylon Lock, 5/8"-11UNC
9	TT-3065023	2	Axle
10	TT-3065010	4	Hub Assembly, Includes Item 11
11	TT-3050003	4	Fitting, Grease
12	TT-3065015	4	Race, Inner Bearing
13	TT-3065001	4	Bearing, Inner
14	TT-3065018	4	Seal, Grease
15	TT-3065016	4	Race, Outer Bearing
16	TT-3065002	4	Bearing, Outer
17	TT-3065021	4	Washer, Flat
18	TT-3065011	4	Nut, Castle
19	TT-3065024	4	Pin, Cotter
20	TT-3065005	4	Cap
21	TT-3065022	4	Wheel Assembly
22	TT-3065020	4	Tire
23	TT-3065004	24	Bolt, Lug, Hex Head, 1/2"-20UNF
24	TT-3065013	4	Pivot, Axle, Includes Item 25
25	TT-3050003	4	Fitting, Grease
26	TT-3065003	1	Bolt, Hex Head, 3/4"-10UNC x 4" Long
27	TT-3065012	1	Nut, Hex, Nylon Lock, 3/4"-10UNC
28	TT-3050119	1	Plate, Model and Serial Numbers
			NSS - Not Serviced Separately

ILLUSTRATED PARTS BREAKDOWN

Figure 3-2. Frame, Single Wheels, Drawbar, Jack and Related Parts



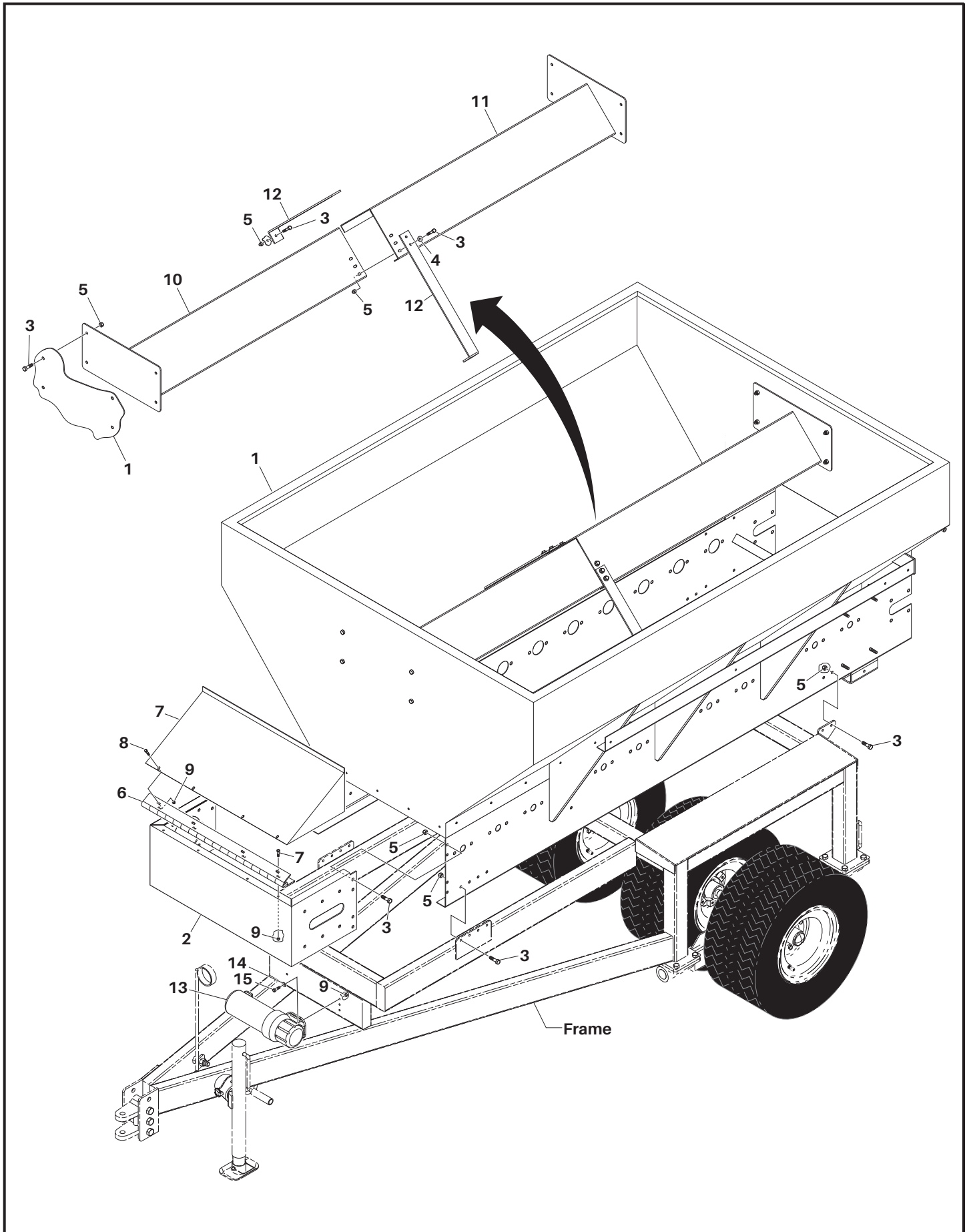
ILLUSTRATED PARTS BREAKDOWN

Figure 3-2. Frame, Single Wheels, Drawbar, Jack and Related Parts

Item	Part No.	Qty	Description
1	NSS	1	Frame Assembly, Single Wheels, Model 3050
2	TT-3050071	1	Holder, Hose
3	TT-3050104	1	Nut, Hex, Nylon Lock, 5/8"-11UNC
4	TT-3050082	1	Jack, Includes Item 5
5	TT-3050109	1	Pin
6	TT-3050070	1	Hitch
7	TT-3050023	3	Bolt, Hex Head, 5/8"-11UNC x 4-1/2" Long
8	TT-3050104	3	Nut, Hex, Nylon Lock, 5/8"-11UNC
9	TT-3050080	2	Hub Assembly, Includes Item 10
10	TT-3050003	2	Fitting, Grease
11	TT-3050121	2	Race, Inner Bearing
12	TT-3050007	2	Bearing, Inner
13	TT-3050133	2	Seal, Grease
14	TT-3050122	2	Race, Outer Bearing
15	TT-3050008	2	Bearing, Outer
16	TT-3050150	2	Washer, Flat
17	TT-3050094	2	Nut, Castle
18	TT-3050112	2	Pin, Cotter
19	TT-3050035	2	Cap
20	TT-3050155	2	Wheel Assembly
21	TT-3050144	2	Tire
22	TT-3050098	16	Nut, Hex, 1/2"-20UNF
			NSS - Not Serviced Separately

ILLUSTRATED PARTS BREAKDOWN

Figure 3-3. Hopper and Related Parts



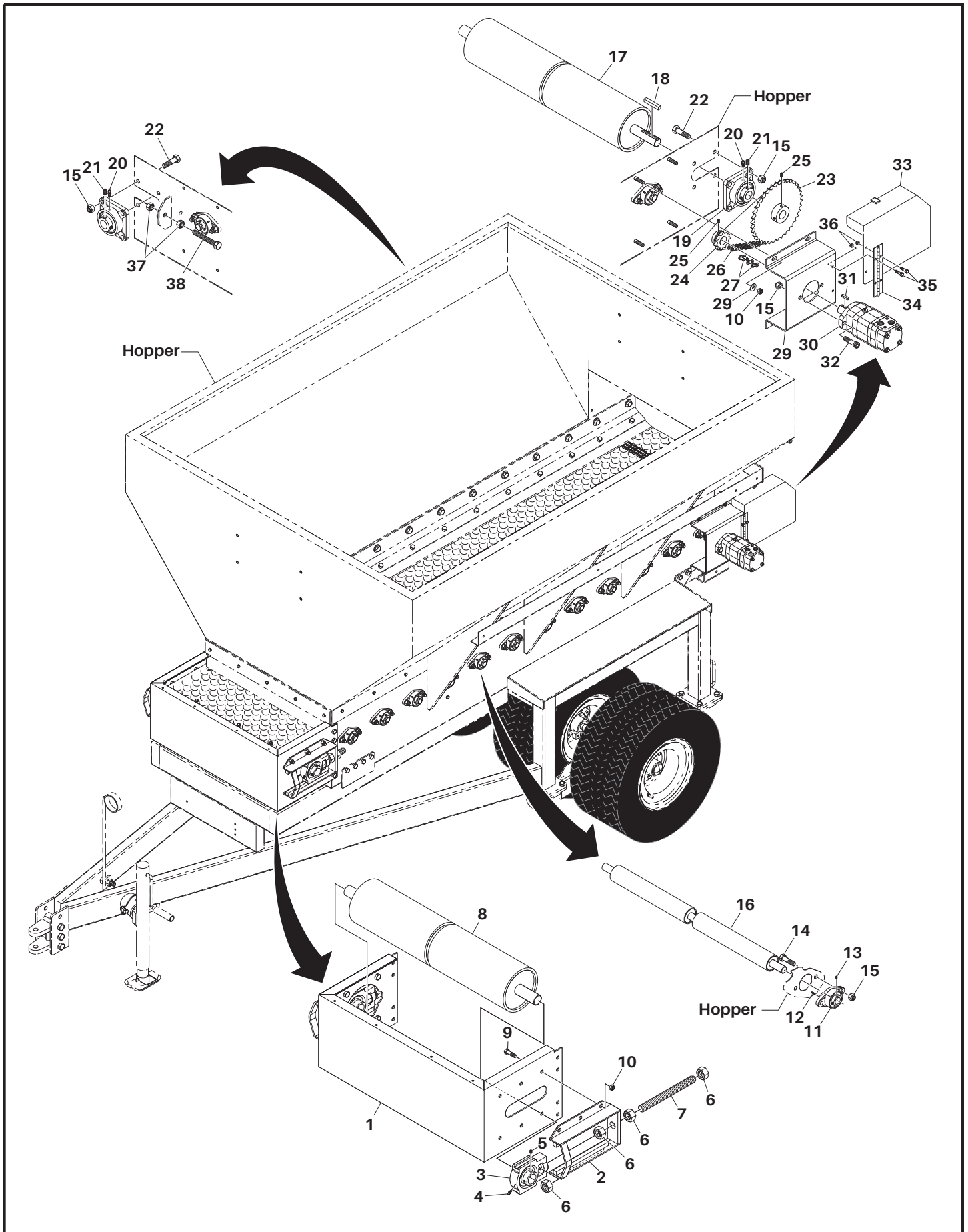
ILLUSTRATED PARTS BREAKDOWN

Figure 3-3. Hopper and Related Parts

Item	Part No.	Qty	Description
1	NSS	1	Hopper Assembly, Model 3050
	NSS	1	Hopper Assembly, Model 3065
2	TT-3050134	1	Shield, Front Apron
3	TT-3050019	36	Bolt, Hex Head, 3/8"-16UNC x 1" Long
4	TT-3050152	6	Washer, Flat, 3/8"
5	TT-3050102	36	Nut, Hex, Nylon Lock, 3/8"-16UNC
6	TT-3050069	1	Hinge, Front Shield and Cover
7	TT-3050040	1	Cover, Front Apron Shield
8	TT-3050016	8	Bolt, Hex Head, 1/4"-20UNC x 3/4" Long
9	TT-3050101	8	Nut, Hex, Nylon Lock, 1/4"-20UNC
10	TT-3050056	1	Deflector, Front, Model 3050
	TT-3065008	1	Deflector, Front, Model 3065
11	TT-3050055	1	Deflector Rear, Model 3050
	TT-3065007	1	Deflector Rear, Model 3065
12	TT-3050031	2	Brace, Deflector
13	TT-3050034	1	Canister, Owners Manual
14	TT-3050151	3	Washer, Flat, 1/4"
15	TT-3050013	3	Bolt, Hex Head, 1/4"-20UNC x 1" Long
			NSS - Not Serviced Separately

ILLUSTRATED PARTS BREAKDOWN

Figure 3-4. Rollers, Bearings and Related Parts



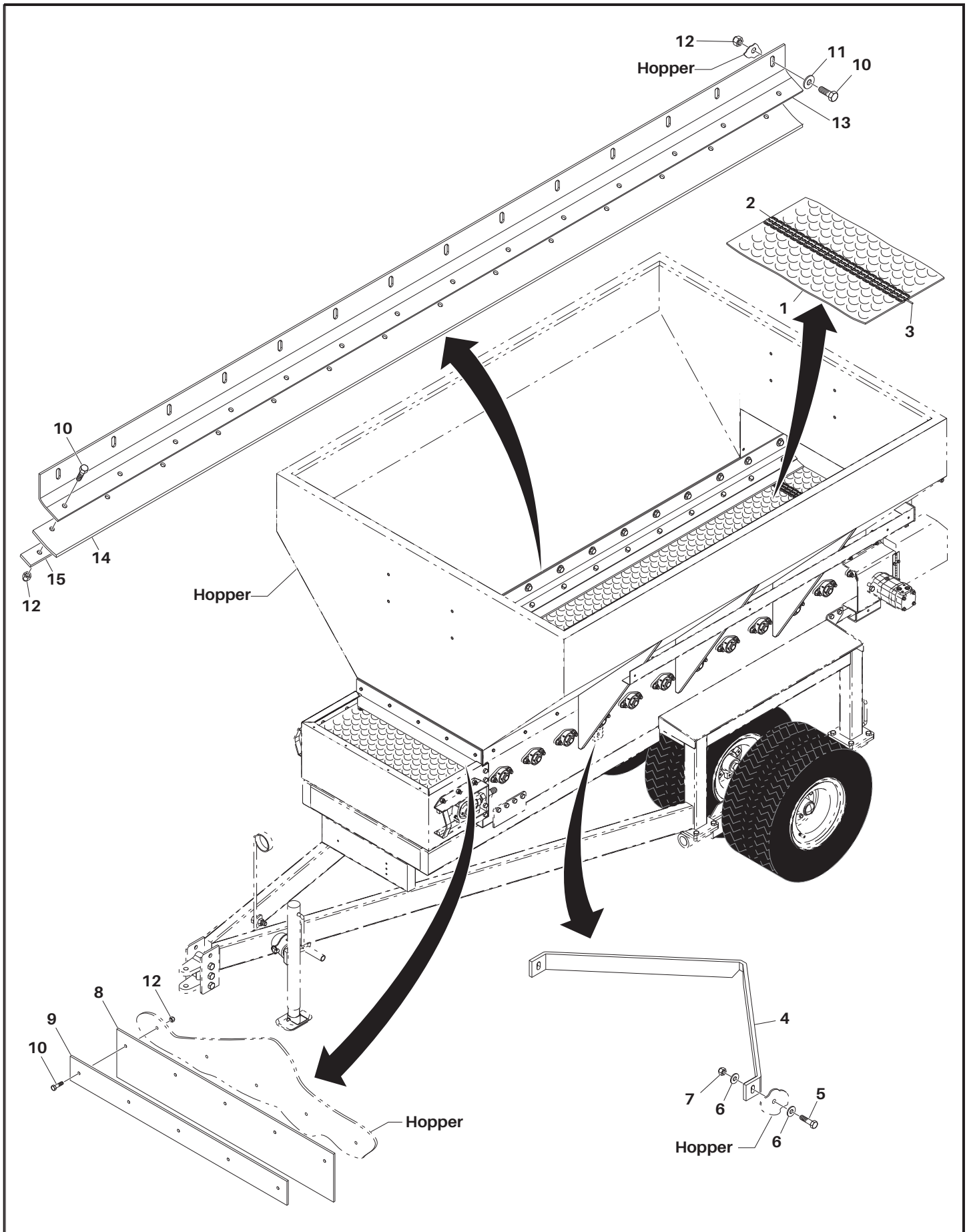
ILLUSTRATED PARTS BREAKDOWN

Figure 3-4. Rollers, Bearings and Related Parts

Item	Part No.	Qty	Description
1	TT-3050134	1	Shield, Front Apron
2	TT-3050033	2	Bracket, Front Roller
3	TT-3050006	2	Bearing, Front Roller, Includes Items 4 & 5
4	TT-3050003	2	Fitting, Grease
5	TT-3050004	4	Screw, Set, 1/4"-28UNF x 1/2" Long
6	TT-3050096	8	Nut, Hex, 1"-8UNC
7	TT-3050123	2	Rod, All Thread, 1"-8UNC x 7" Long
8	TT-3050126	1	Roller, Front
9	TT-3050024	6	Bolt, Hex Head, 7/16"-14UNC x 1" Long
10	TT-3050105	6	Nut, Hex, Nylon Lock, 7/16"-14UNC
11	TT-3050002	14	Bearing, Center Roller, Includes Items 12 & 13
12	TT-3050003	14	Fitting, Grease
13	TT-3050004	28	Screw, Set, 1/4"-28UNF x 1/2" Long
14	TT-3050011	28	Bolt, Hex Head, 1/2"-13UNC x 1-1/2" Long
15	TT-3050100	36	Nut, Hex, Nylon Lock, 1/2"-13UNC
16	TT-3050124	7	Roller, Center
17	TT-3050125	1	Roller, Drive, With Rubber Lagging
18	TT-3050084	1	Key, 3/8" Square
19	TT-3050005	2	Bearing, Drive, Includes Items 20 & 21
20	TT-3050003	2	Fitting, Grease
21	TT-3050004	4	Screw, Set, 1/4"-28UNF x 1/2" Long
22	TT-3050010	8	Bolt, Hex Head, 1/2"-13UNC x 1-1/2" Long
23	TT-3050141	1	Sprocket, Driven, #60-38 Tooth, Includes Item 25
24	TT-3050140	1	Sprocket, Drive, #60-11 Tooth, Includes Item 25
25	TT-3050131	AR	Screw, Set, 5/16"-18UNC x 1/2" Long
26	TT-3050036	1	Chain, Roller, #60, Includes Item 27
27	TT-3050088	1	Link, Master, #60 Chain, Includes Side Plate
28	TT-3050032	1	Bracket, Motor Mount
29	TT-3050149	4	Washer, Flat, 1/2"
30	TT-3050091	1	Motor, Hydraulic, Includes Item 31
31	TT-3050083	1	Key
32	TT-3050029	2	Bolt, Socket Head, 1/2"-13UNC x 1-3/4" Long
33	TT-3050041	1	Cover, Sprocket and Chain
34	TT-3050068	1	Hinge
35	TT-3050016	4	Bolt, Hex Head, 1/4"-20UNC x 3/4" Long
36	TT-3050106	4	Nut, Hex, Nylon Lock, 1/4"-20UNC
37	TT-3050097	2	Nut, Hex, 1/2"-13UNC
38	TT-3050012	1	Bolt, Hex Head, 1/2"-13UNC x 3-1/2" Long
			AR-As Required

ILLUSTRATED PARTS BREAKDOWN

Figure 3-5. Belt and Related Parts



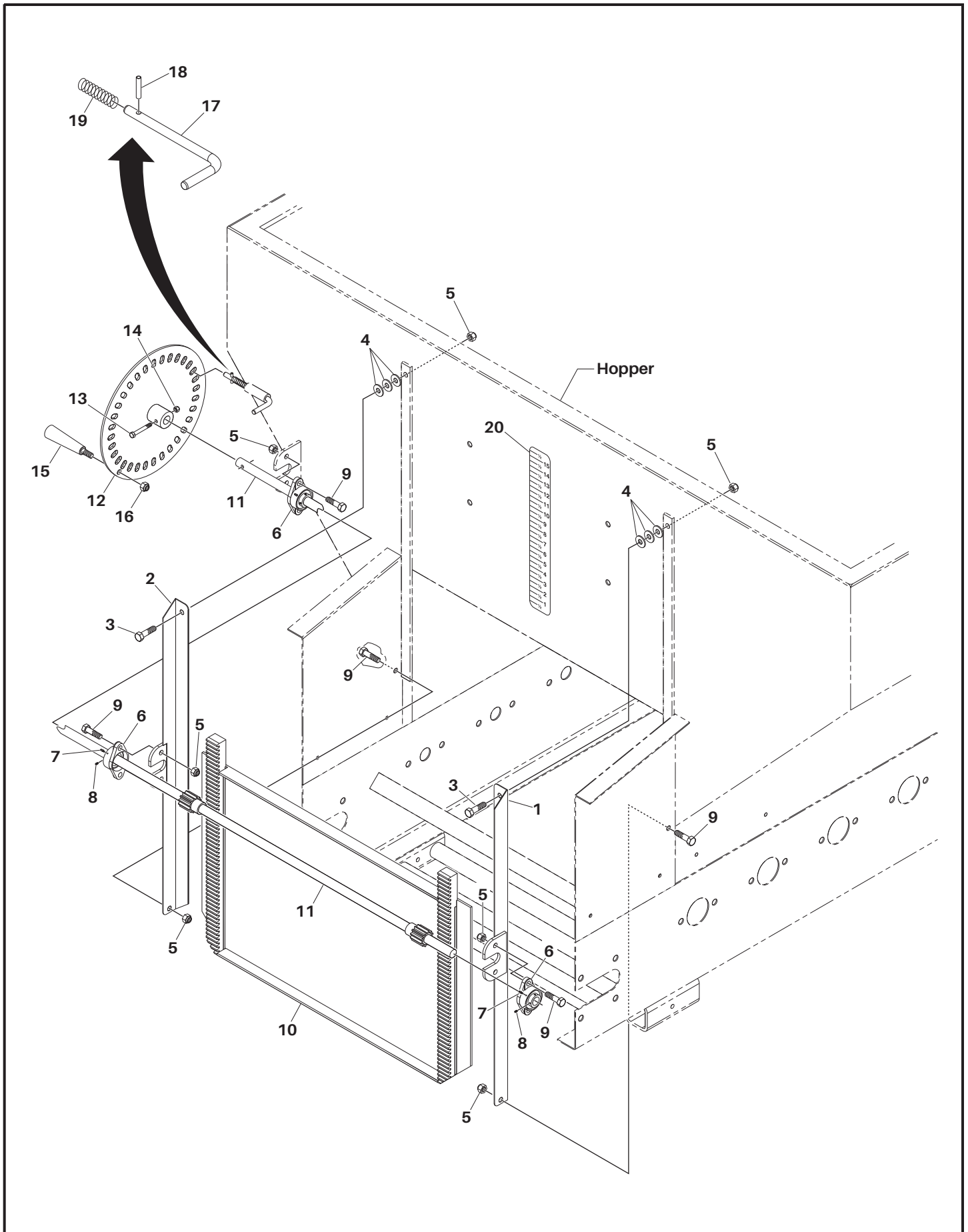
ILLUSTRATED PARTS BREAKDOWN

Figure 3-5. Belt and Related Parts

Item	Part No.	Qty	Description
1	TT-3050009	1	Belt, 30" Wide x 245" Long, Model 3050, Includes Items 2 & 3
	TT-3065009	1	Belt, 30" Wide x 292" Long, Model 3065, Includes Items 2 & 3
2	NSS	2	Lace, Belt
3	NSS	1	Pin, Belt Lace
4	TT-3050130	1	Scraper, Belt
5	TT-3050018	2	Bolt, Hex Head, 3/8"-16UNC x 1-1/4" Long
6	TT-3050152	4	Washer, Flat, 3/8"
7	TT-3050102	2	Nut, Hex, Nylon Lock, 3/8"-16UNC
8	TT-3050129	1	Rubber, Front
9	TT-3050118	1	Plate, Front, Rubber Mounting
10	TT-3050026	AR	Bolt, Hex, Head, 1/4"-20UNC x 1" Long
11	TT-3050151	AR	Washer, Flat, 1/4"
12	TT-3050106	AR	Nut, Hex, Nylon Lock, 1/4"-20UNC
13	TT-3050120	1	Plate, Mounting, Rubber, 108" Long, TT-3050
	TT-3065014	1	Plate, Mounting, Rubber, 132" Long, TT-3065
14	TT-3050128	2	Rubber, 3" Wide x 108" Long, Model TT-3050
	TT-3065017	2	Rubber, 3" Wide x 132" Long, Model TT-3065
15	TT-3050143	2	Strip. Metal, Rubber Support, 108" Long, Model TT-3050
	TT-3065019	2	Strip. Metal, Rubber Support, 132" Long, Model TT-3065
NS	TT-59530	1	Tube, Silicone, for Belt Lacing, Item 2 & 3
			NS-Not Shown AR-As Required NSS-Not Sold Separately

ILLUSTRATED PARTS BREAKDOWN

Figure 3-6. Gate Assembly and Related Parts



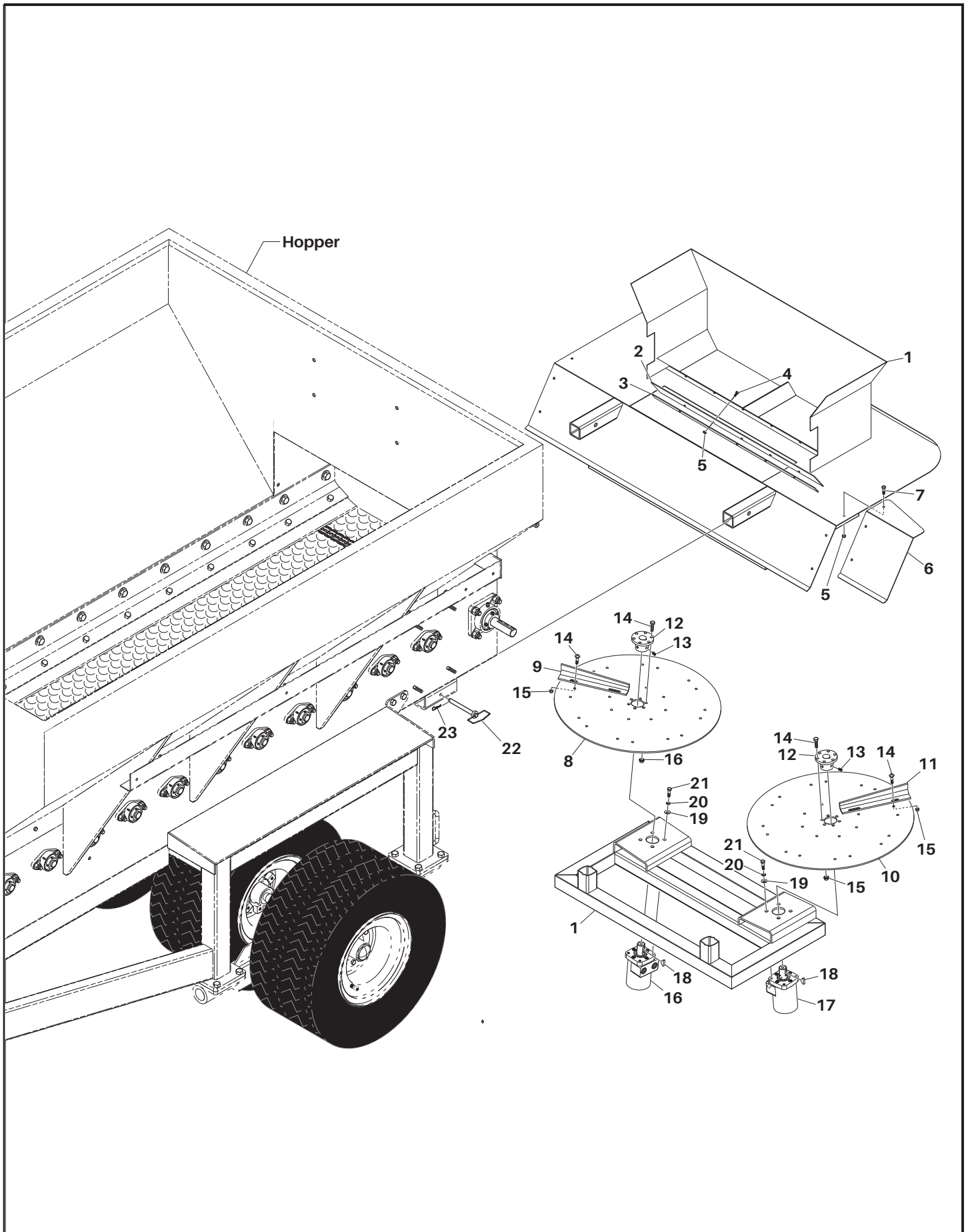
ILLUSTRATED PARTS BREAKDOWN

Figure 3-6. Gate Assembly and Related Parts

Item	Part No.	Qty	Description
1	TT-3050146	1	Track, Gate, Right Hand
2	TT-3050145	1	Track, Gate, Left Hand
3	TT-3050017	2	Bolt, Hex Head, 3/8"-16UNC x 1-1/2" Long
4	TT-3050152	6	Washer, Flat, 3/8"
5	TT-3050102	10	Nut, Hex, Nylon Lock, 3/8"-16UNC
6	TT-3050002	3	Bearing, Includes Items 7 & 8
7	TT-3050003	3	Fitting, Grease
8	TT-3050004	6	Screw, Set, 1/4"-28UNF x 1/2" Long
9	TT-3050019	8	Bolt, Hex Head, 3/8"-16UNC x 1" Long
10	TT-3050066	1	Gate Assembly
11	TT-3050117	1	Pinion Shaft
12	TT-3050156	1	Wheel, Adjusting, Gate Assembly
13	TT-3050015	1	Bolt, Hex Head, 1/4"-20UNC x 2" Long
14	TT-3050101	1	Nut, Hex, Nylon Lock, 1/4"-20UNC
15	TT-3050067	1	Handle, Adjusting Wheel
16	TT-3050102	1	Nut, Hex, Nylon Lock, 3/8"-16UNC
17	TT-3050115	1	Pin, Lock, Adjusting Wheel
18	TT-3050110	1	Pin
19	TT-3050139	1	Spring, Compression
20	TT-3050046	1	Decal, Gate Gauge

ILLUSTRATED PARTS BREAKDOWN

Figure 3-7. Spinner Attachment and Related Parts



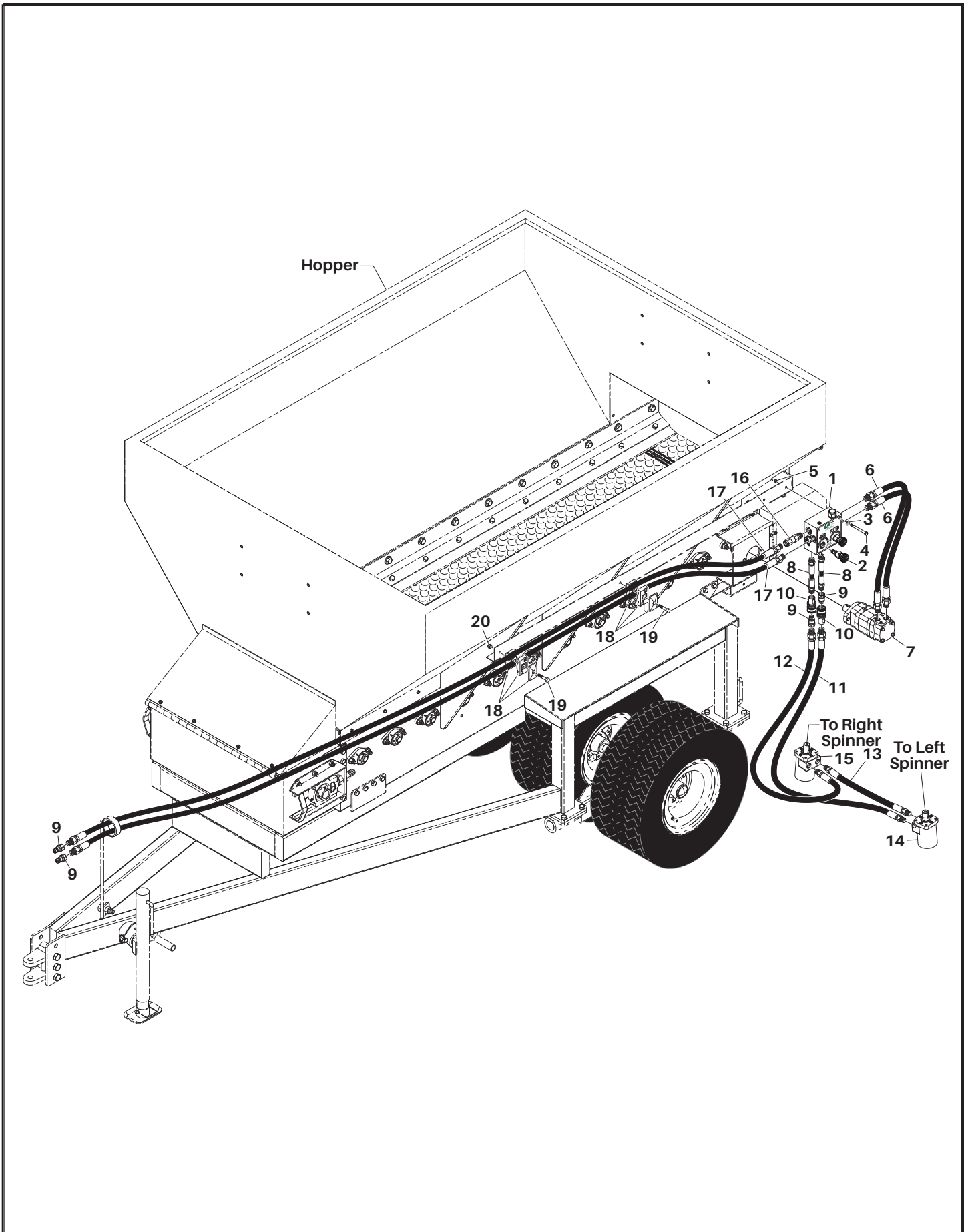
ILLUSTRATED PARTS BREAKDOWN

Figure 3-7. Spinner Attachment and Related Parts

Item	Part No.	Qty	Description
1	TT-3050138	1	Spinner Attachment
2	TT-3050127	1	Rubber
3	TT-3050142	1	Strip
4	TT-3050025	5	Bolt, Hex Head, 1/4"-20UNC x 1" Long
5	TT-3050101	5	Nut, Hex, Nylon Lock, 1/4"-20UNC
6	TT-3050057	1	Fender, Left Side (Shown)
	TT-3050058	1	Fender, Right Side
7	TT-3050016	6	Bolt, Hex Head, 1/4"-20UNC x 3/4" Long
8	TT-3050137	1	Spinner Assembly, Right Side, Includes Item 9
9	TT-3050108	AR	Paddle, Right Side
10	TT-3050136	1	Spinner Assembly, Left Side, Includes Item 11
11	TT-3050107	AR	Paddle, Left Side
12	TT-3050081	2	Hub, Spinner, Includes Item 13
13	TT-3050131	4	Screw, Set, 5/16"-18UNC x 1/2" Long
14	TT-3050021	AR	Bolt, Hex Head, 5/16"-18UNC x 1" Long
15	TT-3050095	AR	Nut, Hex Nylon Lock, 5/16"-18UNC
16	TT-3050093	1	Motor, Hydraulic, Right Side Spinner, Includes Item 18
17	TT-3050092	1	Motor, Hydraulic, Left Side Spinner, Includes Item 18
18	TT-3050085	1	Key, Woodruff
19	TT-3050152	8	Washer, Flat, 3/8"
20	TT-3050154	8	Washer, Lock, 3/8"
21	TT-3050020	8	Bolt, Hex Head, 3/8"-16UNC x 3/4" Long
22	TT-3050114	2	Pin, Hitch, 1/2" Dia. x 4" Long
23	TT-3050113	2	Pin, Hair Cotter
			AR-As Required

ILLUSTRATED PARTS BREAKDOWN

Figure 3-8. Hydraulics and Related Parts



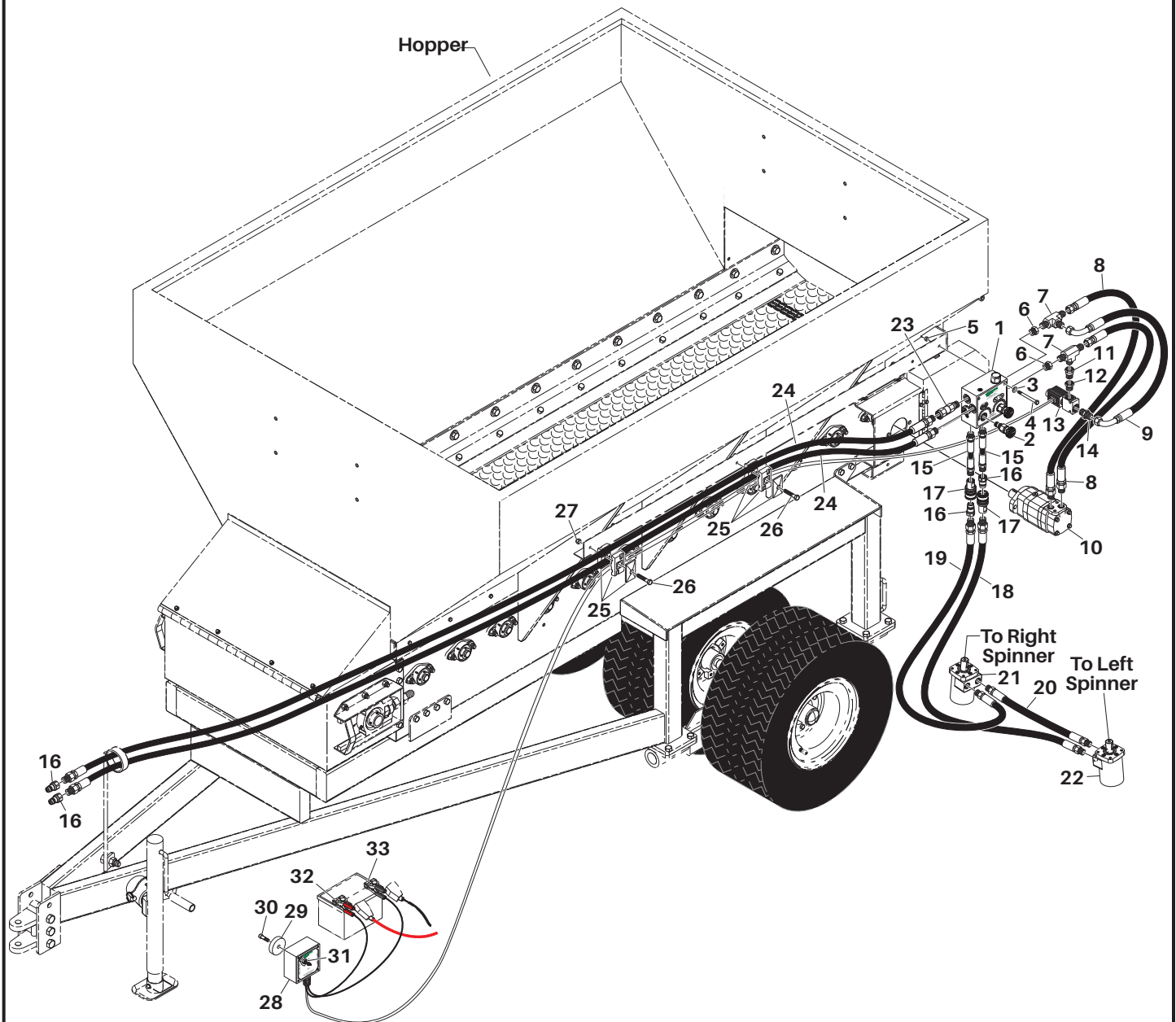
ILLUSTRATED PARTS BREAKDOWN

Figure 3-8. Hydraulics and Related Parts

Item	Part No.	Qty	Description
1	TT-3050147	1	Valve Assembly, Includes Item 2
2	TT-3050086	2	Knob, Controls
3	TT-3050153	2	Washer, Flat, 5/16"
4	TT-3050022	2	Bolt, Hex Head, 5/16"-18UNC x 3-3/4" Long
5	TT-3050103	2	Nut, Hex, Nylon Lock, 5/16"-18UNC
6	TT-3050072	2	Hose Assembly, 1/2" Dia. x 19" Long
7	TT-3050090	1	Motor, Hydraulic, Chain Drive
8	TT-3050077	2	Hose Assembly, 1/2" Dia. x 6" Long
9	TT-3050064	4	Fitting, Quick Disconnect, Male
10	TT-3050063	2	Fitting, Quick Disconnect, Female
11	TT-3050076	1	Hose Assembly, 1/2" Dia. x 64" Long
12	TT-3050078	1	Hose Assembly, 1/2" Dia. x 66" Long
13	TT-3050075	1	Hose Assembly, 1/2" Dia. x 20-1/2" Long
14	TT-3050092	1	Motor, Hydraulic, Left Side Spinner
15	TT-3050093	1	Motor, Hydraulic, Right Side Spinner
16	TT-3050148	1	Valve, Check
17	TT-3050074	2	Hose Assembly, 1/2" Dia. x 175" Long, Model TT-3050
	TT-3065009	2	Hose Assembly, 1/2" Dia. x 205" Long, Model TT-3065
18	TT-3050037	2	Clamp, Hose
19	TT-3050014	2	Bolt, Hex Head, 1/4"-20UNC x 2-1/2" Long
20	TT-3050106	2	Nut, Hex, Nylon Lock, 1/4"-20UNC

ILLUSTRATED PARTS BREAKDOWN

Figure 3-9. Hydraulics With Option Switch Box and Related Parts



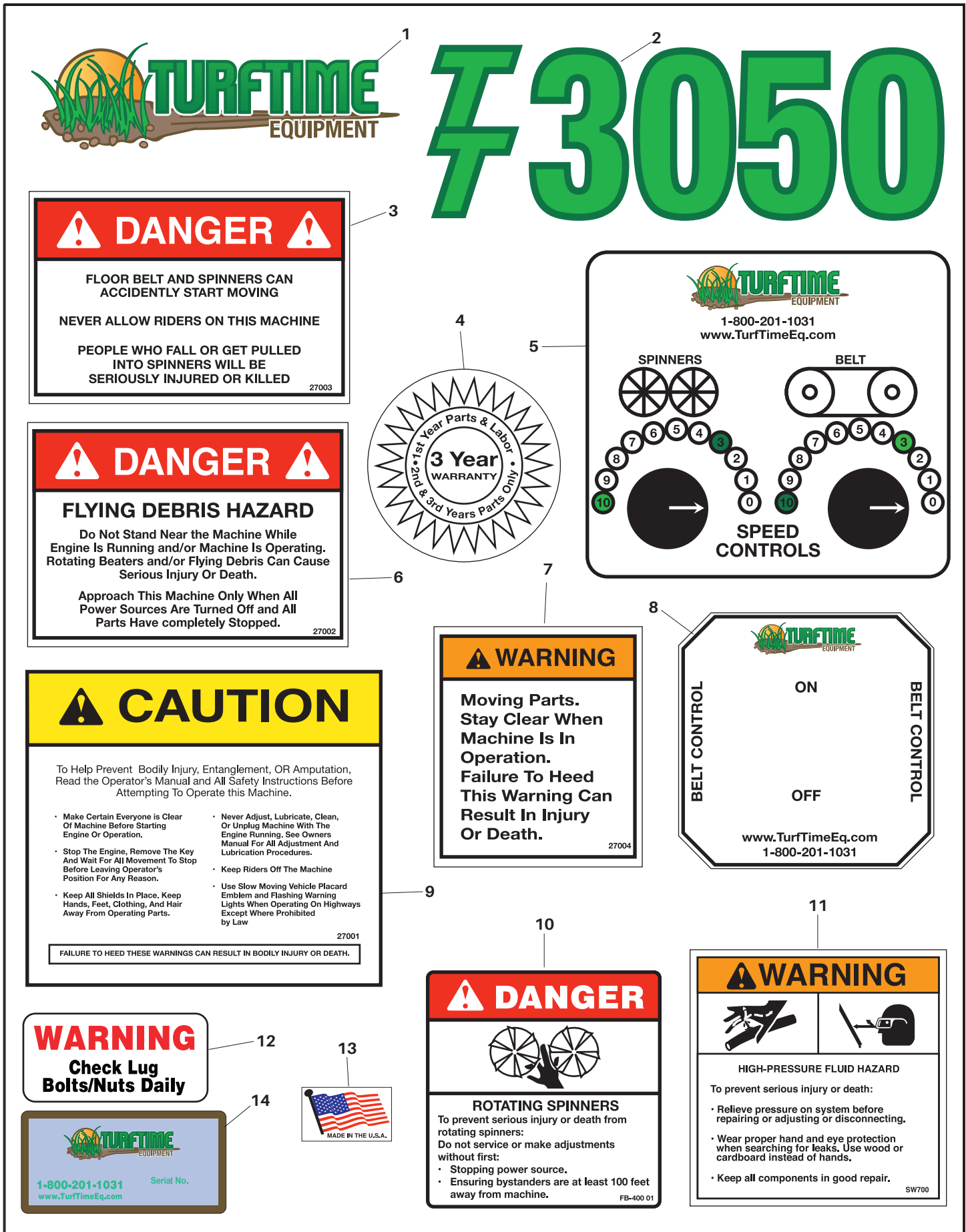
ILLUSTRATED PARTS BREAKDOWN

Figure 3-9. Hydraulics With Option Switch Box and Related Parts

Item	Part No.	Qty	Description
1	TT-3050147	1	Valve Assembly, Includes Item 2
2	TT-3050086	2	Knob, Controls
3	TT-3050153	2	Washer, Flat, 5/16"
4	TT-3050022	2	Bolt, Hex Head, 5/16"-18UNC x 3-3/4" Long
5	TT-3050103	2	Nut, Hex, Nylon Lock, 5/16"-18UNC
6	TT-3050059	2	Fitting, Bushing
7	TT-3050065	2	Fitting, Tee
8	TT-3050072	2	Hose Assembly, 1/2" Dia. x 16" Long
9	TT-3050073	1	Hose Assembly, 1/2" Dia. x 16" Long
10	TT-3050090	1	Motor, Hydraulic, Chain Drive
11	TT-3050060	1	Fitting, Bushing
12	TT-3050061	1	Fitting, Bushing
13	TT-3050135	1	Solenoid, For Optional Switch
14	TT-3050062	1	Fitting, Nipple
15	TT-3050079	2	Hose Assembly, 1/2" Dia. x 6-3/4" Long
16	TT-3050064	4	Fitting, Quick Disconnect, Male
17	TT-3050063	2	Fitting, Quick Disconnect, Female
18	TT-3050076	1	Hose Assembly, 1/2" Dia. x 64" Long
19	TT-3050078	1	Hose Assembly, 1/2" Dia. x 66" Long
20	TT-3050075	1	Hose Assembly, 1/2" Dia. x 20-1/2" Long
21	TT-3050092	1	Motor, Hydraulic, Left Side Spinner
22	TT-3050093	1	Motor, Hydraulic, Right Side Spinner
23	TT-3050148	1	Valve, Check
24	TT-3050074	2	Hose Assembly, 1/2" Dia. x 175" Long, Model TT-3050
	TT-3065009	2	Hose Assembly, 1/2" Dia. x 205" Long, Model TT-3065
25	TT-3050037	2	Clamp, Hose
26	TT-3050014	2	Bolt, Hex Head, 1/4"-20UNC x 2-1/2" Long
27	TT-3050106	2	Nut, Hex, Nylon Lock, 1/4"-20UNC
28	TT-3050030	1	Box, Optional Switch, Belt Control
29	TT-3050089	1	Magnet
30	TT-3050132	1	Screw, Socket Head, #12-24UNC x 3/4" Long
31	TT-3050099	1	Nut, Hex, Nylon Lock, #12-24UNC
32	TT-3050039	1	Clamp, Position
33	TT-3050038	1	Clamp, Negative

ILLUSTRATED PARTS BREAKDOWN

Figure 3-10. Decals



ILLUSTRATED PARTS BREAKDOWN

Figure 3-10. Decals

Item	Part No.	Qty	Description
1	TT-3050047	1	Decal, Logo, TurfTime Equipment
2	TT-3050048	2	Decal, Model TT3050
	TT-3065006	2	Decal, Model TT3065
3	TT-3050043	2	Decal, Danger, Belt and Spinners Accidentally Start
4	TT-3050054	1	Decal, Warranty
5	TT-3050050	1	Decal, Valve
6	TT-3050044	2	Decal, Danger, Flying Debris
7	TT-3050053	1	Decal, Warning, Moving Parts
8	TT-3050049	1	Decal, Optional Switch Box
9	TT-3050042	2	Decal, Caution Prevent Bodily Injury
10	TT-3050045	1	Decal, Danger, Rotating Spinners
11	TT-3050052	1	Decal, Warning, High Pressure Fluid
12	TT-3050051	2	Decal, Warning, Check Lug Bolts
13	TT-8012	1	Decal, Made in USA
14	TT-3050119	1	Plate, Model and Serial Numbers

MAINTENANCE RECORDS

[illegible]

*TurfTime Equipment, LLC
800 N. Railroad Avenue
New Holland PA 17557
Phone (800) 201-1031*

Copyright 2023